

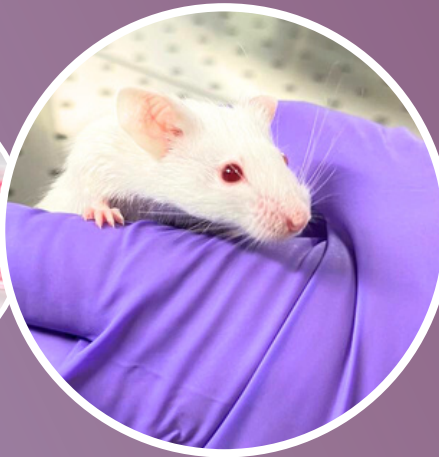


Advice. Expertise. Services.

Your partner for preclinical
studies in oncology



In-vitro services



In-vivo services



Ex-vivo services



Optimize and accelerate the preclinical stages of your drug development strategy

IN-VITRO



Determination of IC50 / EC50 and synergy

- MTT
- MTS
- Cell Titer-Glo®

Continuous monitoring studies

- IncuCyte®
- xCELLigence™

Characterisation of samples

- Quantitative PCR
- Western Blotting
- ELISA assays
- Immunoprecipitation
- Flow cytometry studies

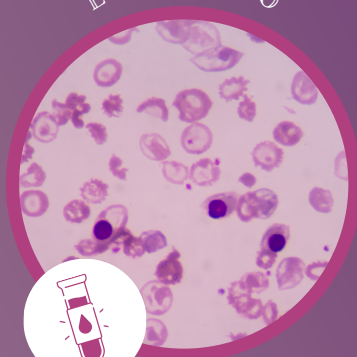
Immunology services

- T cell based assays
- Myeloid cells based assays
- ADCC assays with fresh NK cells
- ADCP assays with fresh myeloid cells

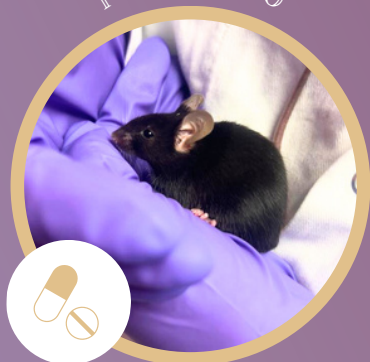
Development of immunotherapies

- Highlight the target and decipher the mechanisms of action of therapeutic antibodies

EX-VIVO



IN-VIVO



Identification of the best models / Choice of the most efficient candidate / Assessment of efficacy at lower costs

- Antitumor efficacy studies : **150 CDX and 40 syngeneic mice models**
- Systemic and haematological toxicity of your compounds in rodents
- Pharmacokinetics properties in mouse and rat
- Orthotopic models
- Secondary resistances to reference therapies

SECONDARY RESISTANCES TO REFERENCES THERAPIES

CDX Models

Lymphoma

Follicular Lymphoma - (RL model):
 • Rituximab / GA101 / R-CHOP / R-DHAP

Mantle Cells Lymphoma - (Granta model):
 • Rituximab

Diffuse large B cells lymphoma - (Toledo model):
 • Rituximab

Burkitt's lymphoma
 • Raji model : Rituximab
 • Daudi model : CAL-101

Myeloma

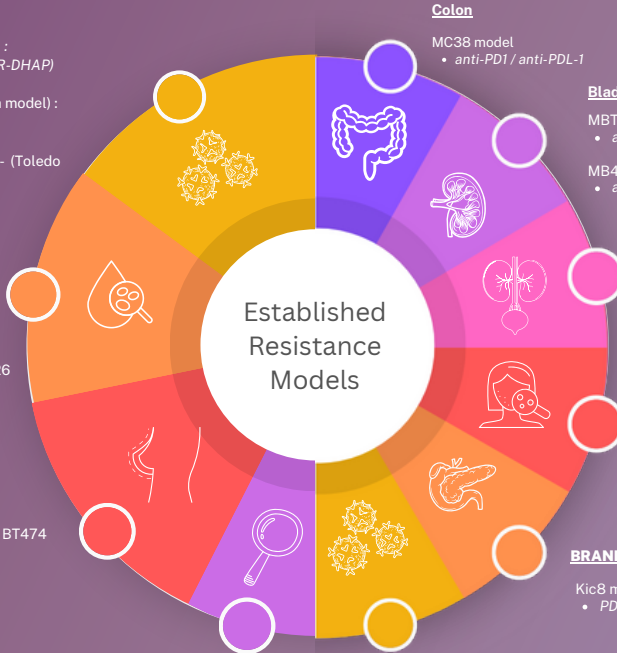
Plasma cells myeloma RPMI8226 model
 • Daratumumab

Multiple myeloma MM.1S
 • Daratumumab

Breast

Tubular Adenocarcinoma BT474
 • T-DM1

MDA-MB-361 model
 • Trastuzumab T-DM1



Bespoke services : On demand development of resistant models (Syngeneic or CDX models)

Syngeneic Models

Colon

MC38 model
 • anti-PD1 / anti-PDL-1

Bladder

MBT-2 model
 • anti-PD1

MB49 model
 • anti-PD1 / anti-PDL-1

Kidney

RENCA model
 • anti-PD1 / anti-PDL-1

Melanoma

B-raf
 • anti-PD1 / anti-PDL-1

N-Ras
 • anti-PD1 / anti-PDL-1

Tyr N-Ras models
 • anti-PD1 / anti-PDL-1

BRAND NEW : Pancreas

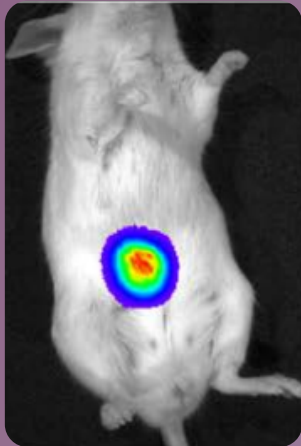
Kic8 model
 • PD1 / PDL1 / Gemcitabine

Lymphoma

P388 model
 • anti-PD1 / anti-PDL-1

IVIS® Lumina Series III Imager

NEW



MDA-MB-231 cell line

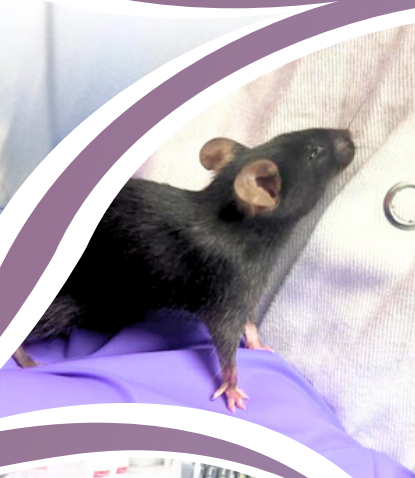


1. **IN-VIVO AND 3D IMAGING OF THE TUMORS / METASTASES**

2. **PRECISE TUMOR MONITORING AND FOLLOW-UP**

3. **BIODISTRIBUTION AND EFFICACY STUDIES**





1

The **reactivity, adaptability and flexibility** of a human-sized compagny

2

A **Scientific Advisory Board** of clinical experts

3

An exceptional access to **cutting-edge technologies, equipments and animal facilities**



To learn more about Antineo's models and services, please contact us:

(+33) 4 72 36 15 71

www.antineo.fr

BIOPARC ROCKEFELLER
BATIMENT BIOSERRA 2
2E ETAGE - 60F AVENUE ROCKEFELLER
69008 LYON

[Antineo](https://www.linkedin.com/company/antineo)



Marie TAUTOU, PhD

Study Director

Head of Business Development

marie.tautou@antineo.fr



Charline PERROUIN

Business Development Manager

Head of Communications

charline.perrouin@antineo.fr