



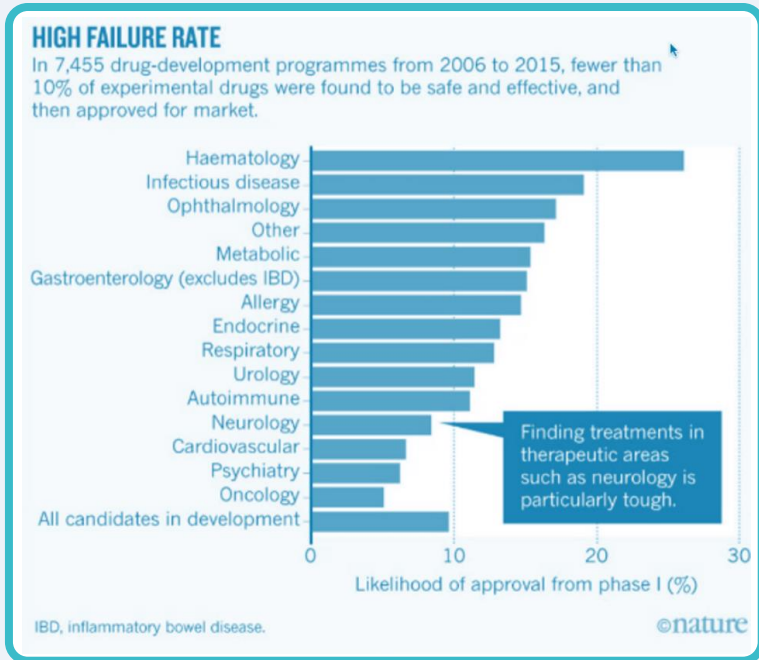
Preclinical and regulatory package unique in Europe

Scientific and technical continuity to support your product development in neurology,

from rodents to primates

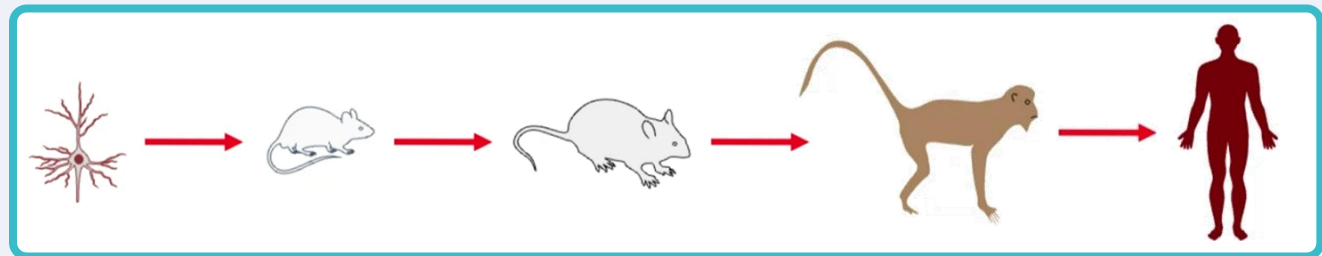


∞ CNS: the challenges of preclinical studies

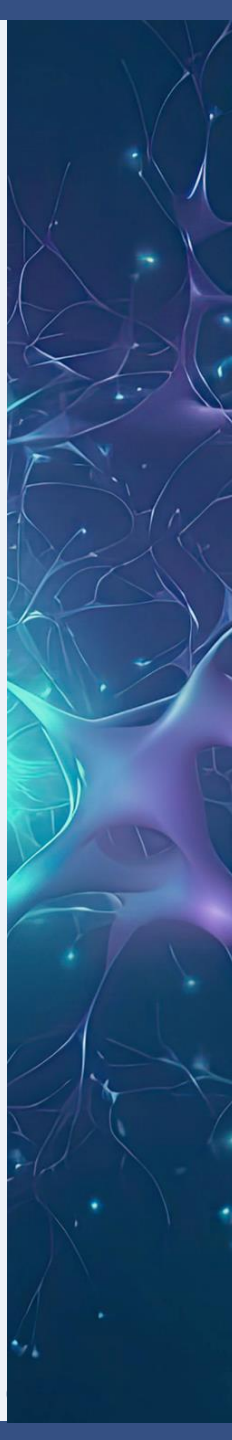
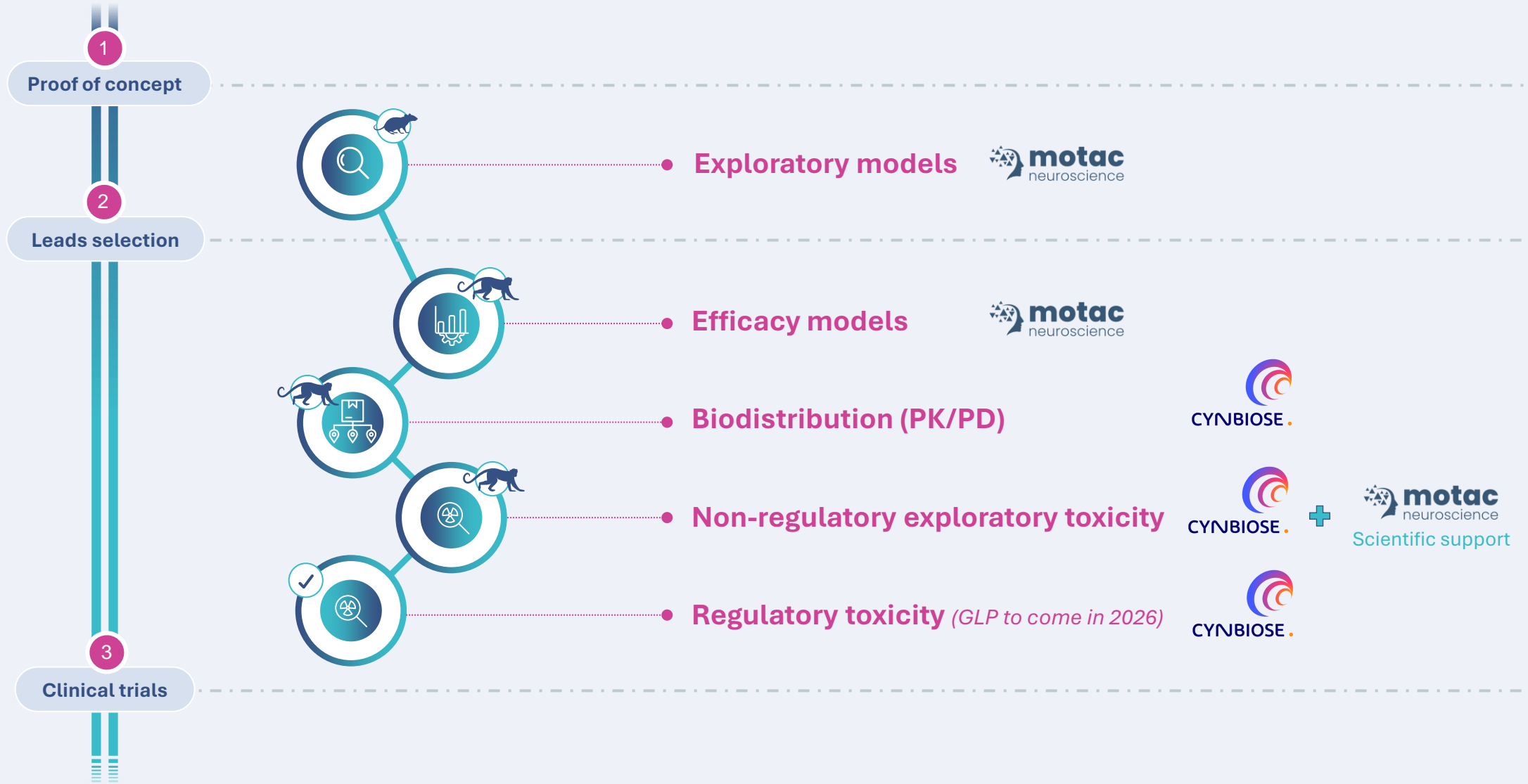


- ✓ **Reproducibility** crisis in biology
- ✓ **CNS: high attrition rate** (few studies on NHPs...)
- ✓ **Stability** and **continuity** of partners sought
- ✓ Need to control **study turnaround times**
- ✓ **Relevance** of large animal models compared with alternative models

Translatability
& **clinically-relevant endpoints**
are core tenets of a predictive animal model



∞ A unique Preclinical and regulatory package



∞ Exploratory biodistribution, PK/PD and neurotoxicity

✓ Species:

- Cynomolgus macaque, AAALAC-accredited animal facility

✓ ROA:

- Classical: IV (infusion up to 6h), SC, etc.
- Intranasal (nose-to-brain)
- Intrathecal: w or w/o catheterization, laminectomy, lumbar or cisternal
- Stereotactic: intraventricular or intraparenchymal

✓ Specific sample collection:

- Chronic CSF collection
- Brain microdialysis
- Expert collection of fresh neural tissue (brain structures, DRG)

✓ Readouts:

- Neurobehavioral FOB
- MRI (fMRI, CSI MRS), PET-MRI
- Clinical pathology
- FACS, cytokines, complement fragments, ELISA, LC/MS-MS, etc.
- Histopathology, IHC

Secured access
to primate resources

Focus on animal
welfare

GLP-like QMS
(SOP, archives, SEND)

Biosafety
GMO, pathogens



Preclinical NHP expert



Primate animal facility opened in 2024 [BSL 1-3]

Specialist in exploratory toxicity and infectious diseases

GLP-like QMS

∞ Unique European facility for preclinical research



ANIMAL FACILITIES

500sqm of housing (ABSL 1-3) & laboratory space (BSL 1-3)

- NHP capacity: 100 ABSL 1-2, 50 ABSL 3
- Rodent & non-rodent species for infectious studies
- Highly energy-efficient building

ANIMAL WELFARE

Animal welfare, staff health & safety (AAALAC- accredited since 2015)
EU-compliant large enclosures, social housing, environmental enrichment

BIOCONTAINMENT

Handling of **pathogens BSL 1-3** (virus, bacteria, including aerosols) & **GMO C1-3**

SECURITY

24/7 CCTV, several alarm systems, strong IT security, local and cloud data backups, 48h autonomous power supply with global UPS

3 000 M2 OF FACILITIES AND OFFICES
STATE-OF-THE-ART ANIMAL FACILITIES



With the support

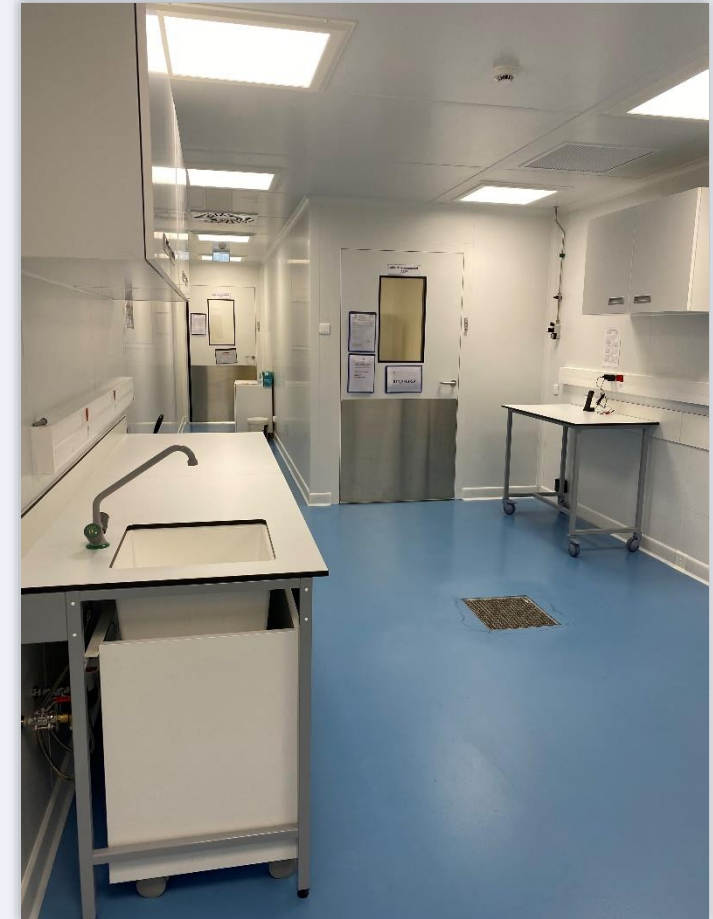




Unique European facility for preclinical research








CYNBIOSE.



1 autopsy room, 4 procedure rooms, 1 surgery room (X-ray enabled), 2 sample processing rooms

∞ Unique European facility for preclinical research



-  8 housing rooms with 2 to 4 large enclosures per room, 4 to 8 animals per enclosure
-  Wood shavings bedding
-  Environmental enrichment
 - › Verticality: shelves, bars
 - › Toys rotated weekly
 - › Mirrors, swings
 - › Treats scattered in the litter
-  Isolation modules for procedures and diuresis
-  Stress-free environment
 - › Multiple access point to food and water to avoid conflict
 - › 30-minute progressive lighting at beginning and end of photo period
 - › Background music during the day

∞ Unique European facility for preclinical research



CYNBIOSE.



Two independent AHU (BSL2-BSL3)
Thermal disinfection of liquid effluents.



Leader in primate neurological disease modeling



Neurological in-life disease models

Collection of physiological indexes on animal behavior

Post-mortem analyses

∞ A wide range of expertises in CNS

CORE EXPERTISES



Cell Biology System



Neurology



Animal Behavior

DISEASE MODELING

A wide range of **rodent** and **NHP models** of movement disorders and neurodegeneration

SCIENTIFIC TEAM

Our in-house scientists include internationally recognized experts in neuroanatomy, neurophysiology, neuropharmacology and neuropsychology. Our CEO is top academic scientist with **more than 400 publications** (score: $H=100 / I10: 285$) in these fields.

SECURE ACCESS to unlimited primate resources



1500 SQM OF FACILITIES AND OFFICES
IN FRANCE & CHINA

∞ A wide range of expertise in CNS



- ✓ Models of Proteinopathies i.e., PD, MSA, AD, PSP, HD and SLA
- ✓ Models of movement disorders
- ✓ Models of cognitive disorders
- ✓ Models of spinal cord injury
- ✓ Stereotactic surgery
- ✓ Neurohistology / Immunohistochemistry
- ✓ Neurochemistry / Neurobiochemistry
- ✓ In vivo (chronic) calcium imaging
- ✓ Measurement of motor performance
- ✓ CANTAB platform for cognition
- ✓ Measurement of sleep and attention

Expert Consultancy

Lab-based research

Highly-trained & dedicated staff

Access to state-of-the-art technology







The strength of our package

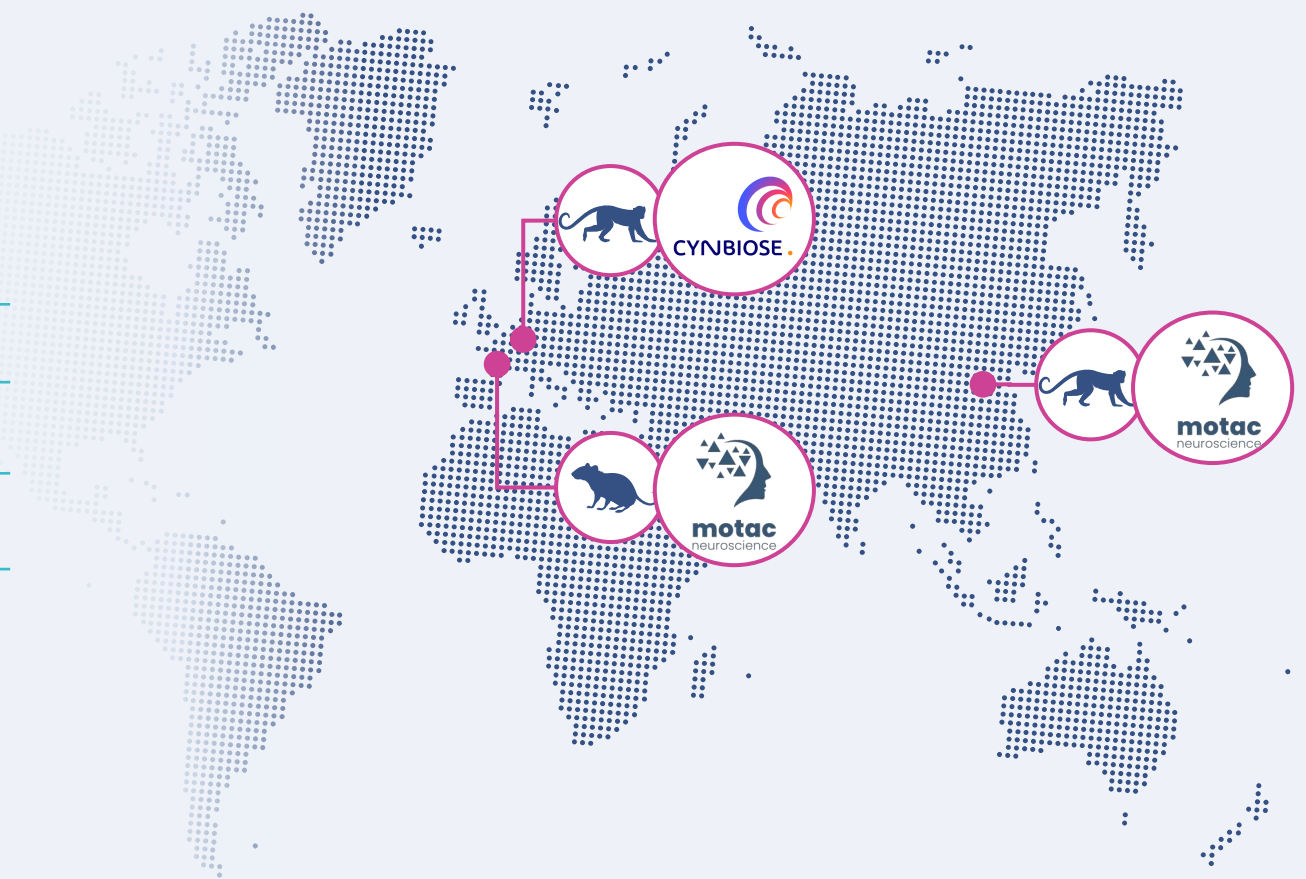
Scientific and technical continuity
to support your product development
in neurology, from rodents to primates



∞ Highly complementary players



	1999	2008
	From 2016	From 2015
	✓ Quality Control	GLP studies in 2026
	300+ publications	70+ publications
	SNC Expert , Leader in neurological disease modeling in NHP	Expert in pre-clinical NHP studies



Highly complementary players



- ✓ Leader in **primate neurological disease modeling**
- ✓ **Scientific excellence** in neurology
- ✓ Ability to **inject or collect samples from living animals** in deep structures



- ✓ Ability to **set up flexible and responsive exploratory protocols** within a solid quality framework
- ✓ Implement **primate studies in confined environments**
- ✓ **Pure-player** European primate CRO





The **5** Strengths of our package

- 1** A continuous in-life preclinical package from mouse to NHP
- 2** A unique scientific & technical CNS expertise
- 3** High QMS standards
- 4** EU & AAALAC animal welfare standards
- 5** Flexibility, responsiveness, commitment

∞ Contact us !

The sun never sets on your CNS research!



-  cynbiose.com
-  Lyon, France
-  contact@cynbiose.com



-  motac.com
-  Bordeaux, France
-  Beijing, China
-  info@motac.com

